

## **Puritan Report for Batch – 25-806 1 WC FDNA Lot# 3593**

Prepared by the University of Maine DNA Sequencing Facility/ Patty Singer,  
September 25, 2013

Swabs were received for testing on September 16, 2013

### **Testing Scheme**

DNA Test: 80 Test Swabs [27 from Beginning (1-27), 26 from Middle (28-53) and  
27 from End (54-80)]

3 Positive Control Cheek Swabs CS1, CS2 and CS3 (81-83)

3 Genomic DNA Control Reactions (84-86)

1 No DNA Control (87)

DNase Test: 27 Test Swabs [9 Beg. (1-9), 9 Mid. (10-18) and 9 End (19-27)]

1 Positive Control

1 Negative Control

RNase Test: 27 Test Swabs [9 Beg. (1-9), 9 Mid. (10-18) and 9 End (19-27)]

1 Positive Control

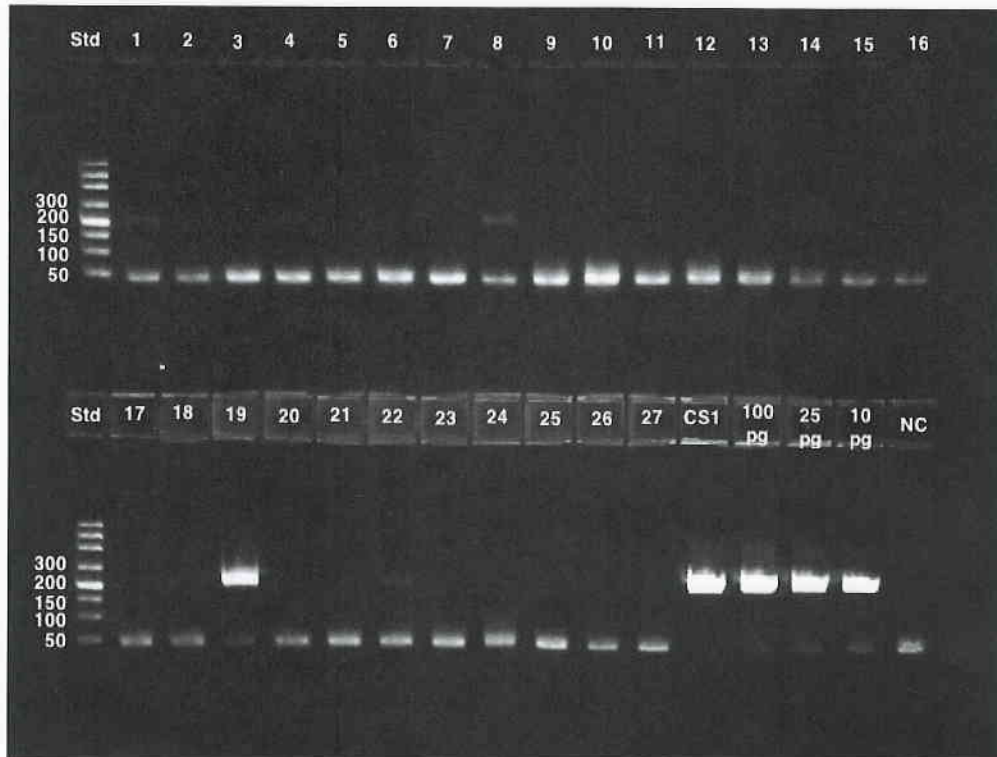
1 Negative Control

### **DNA Test**

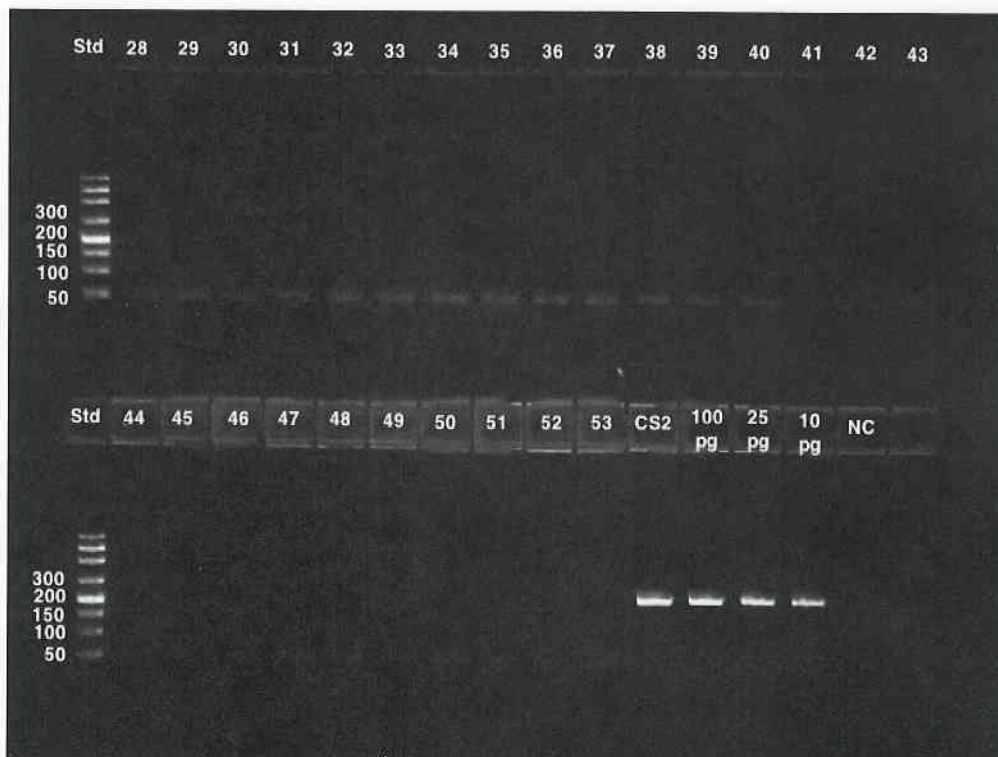
DNA was extracted from swabs using the Qiagen QIAamp DNA Blood Mini Kit in conjunction with the Qiagen QIAcube automated DNA prep instrument. In addition to the 80 sample swabs, DNA was also isolated from three positive control cheek swabs. PCR amplifications were performed on the DNA preps to determine whether DNA is present on the sample swabs. In addition to the 83 DNA preps, amplifications were also done on three control genomic DNA amounts (100 pg, 25 pg and 10 pg) as well as a no DNA control for a total of 87 PCR amplifications. The primers used for the amplifications are the human DNA repeat region AluYb8 (225bp).

After amplification an aliquot of each reaction was run on a 2.2% double tier Lonza flash gel. A DNA ladder was also loaded as a size standard. One gel was run for each region tested (Beginning, Middle and End).

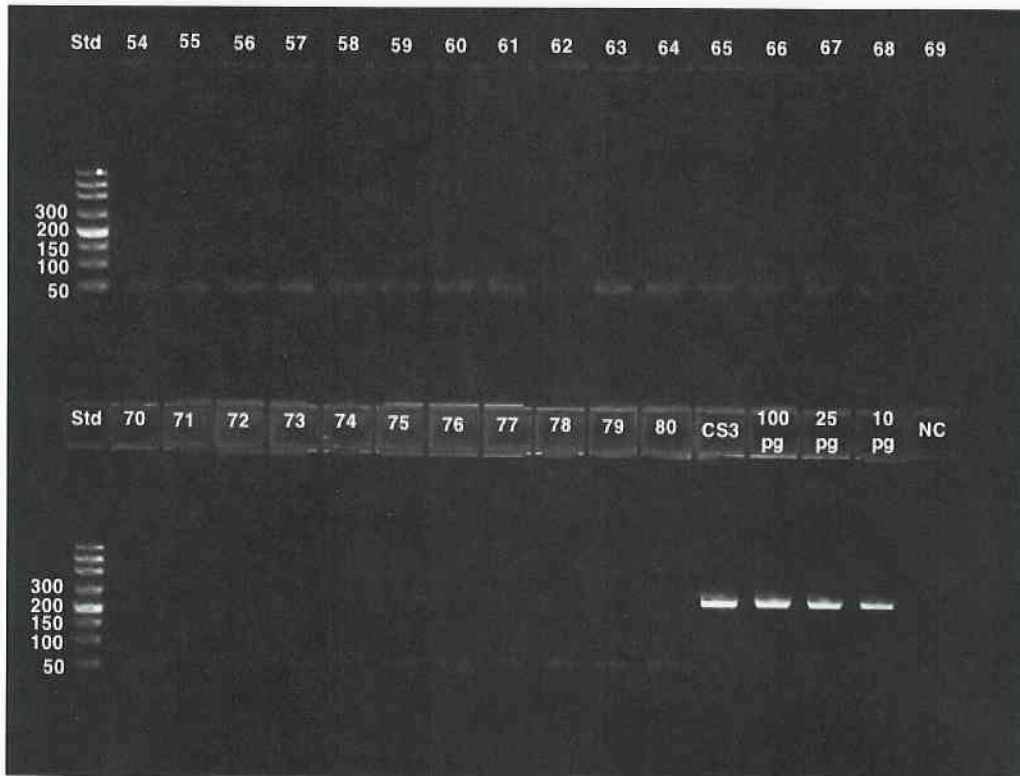
### Beginning Swab Gel



### Middle Swab Gel



## End Swab Gel



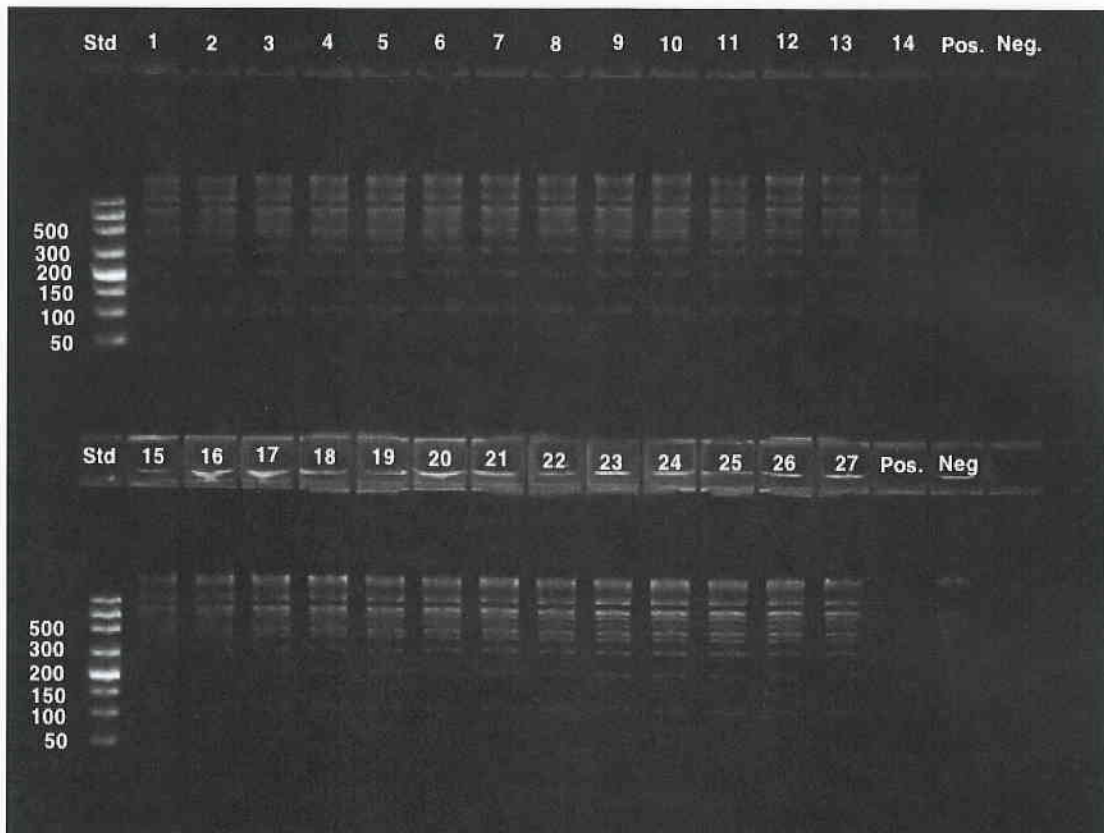
For the beginning gel 5 ul of each sample was loaded. The control lanes appear to be overloaded so for the subsequent gels only 1 ul of each sample was loaded. The results show that no sample swabs have bands as bright as the 25 pg control lane. Sample 19 appears to be about the same intensity as the 25pg control.

Based on the above data these swabs are considered to be DNA-free and PASS.

## DNase Test

Twenty-seven sample swabs were tested for the presence of DNase activity. Two controls, one positive and one negative, were also tested. The swabs and controls were incubated with the 1 KB Plus DNA ladder added as the substrate. The controls contained no swabs; the positive control had the addition of DNaseI while the negative control did not. Aliquots of each reaction were run on a 2.2% double tier Lonza flash gel. If there is DNase present on the swabs, then the 1 KB Plus DNA ladder from the test reactions should show degradation when compared to the negative control.

## DNase Gel

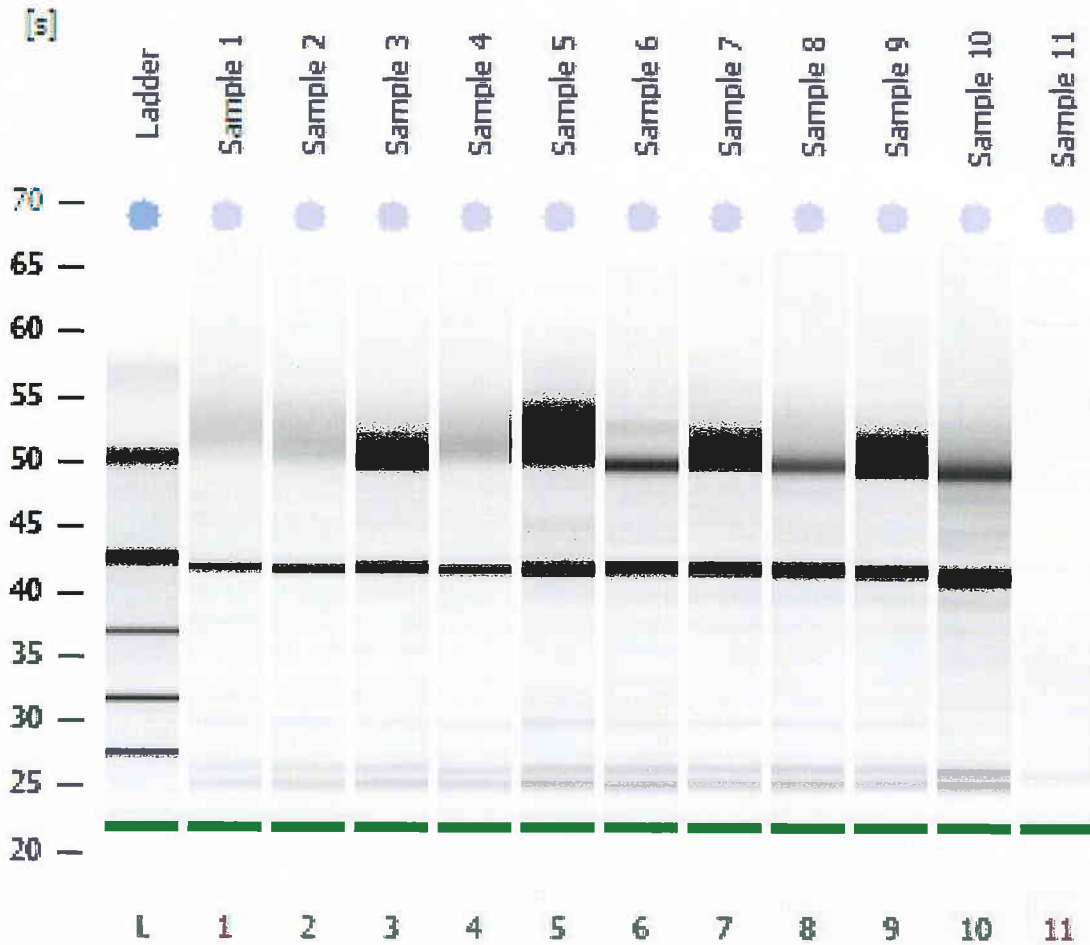


There is no degradation of substrate DNA after incubation with the swabs so these swabs are considered to be DNase-free and PASS.

## RNase Test on Batch 25-806 1WC FDNA Lot# 3593

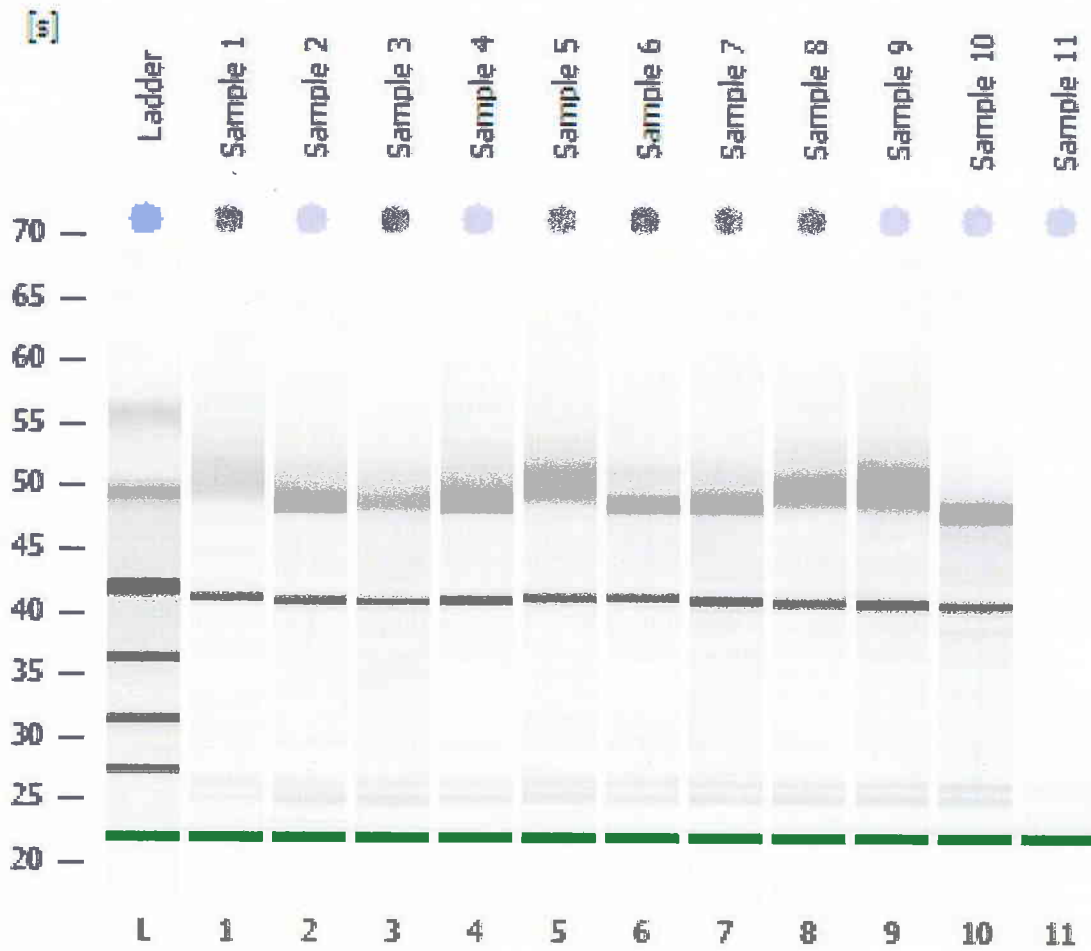
Twenty-seven swabs were tested for the presence of RNase activity. Two controls, one positive and one negative, were also tested. The swabs and controls were incubated with total RNA added as the substrate. The controls contained no swabs; the positive control had the addition of RNase A while the negative control did not. Aliquots of each reaction were run on the Agilent Bioanalyzer. If there is any RNase present on the swabs the ribosomal RNA bands should show degradation when compared to the negative control. One chip was run for each region tested, beginning, middle and end.

### Beginning Swab Chip



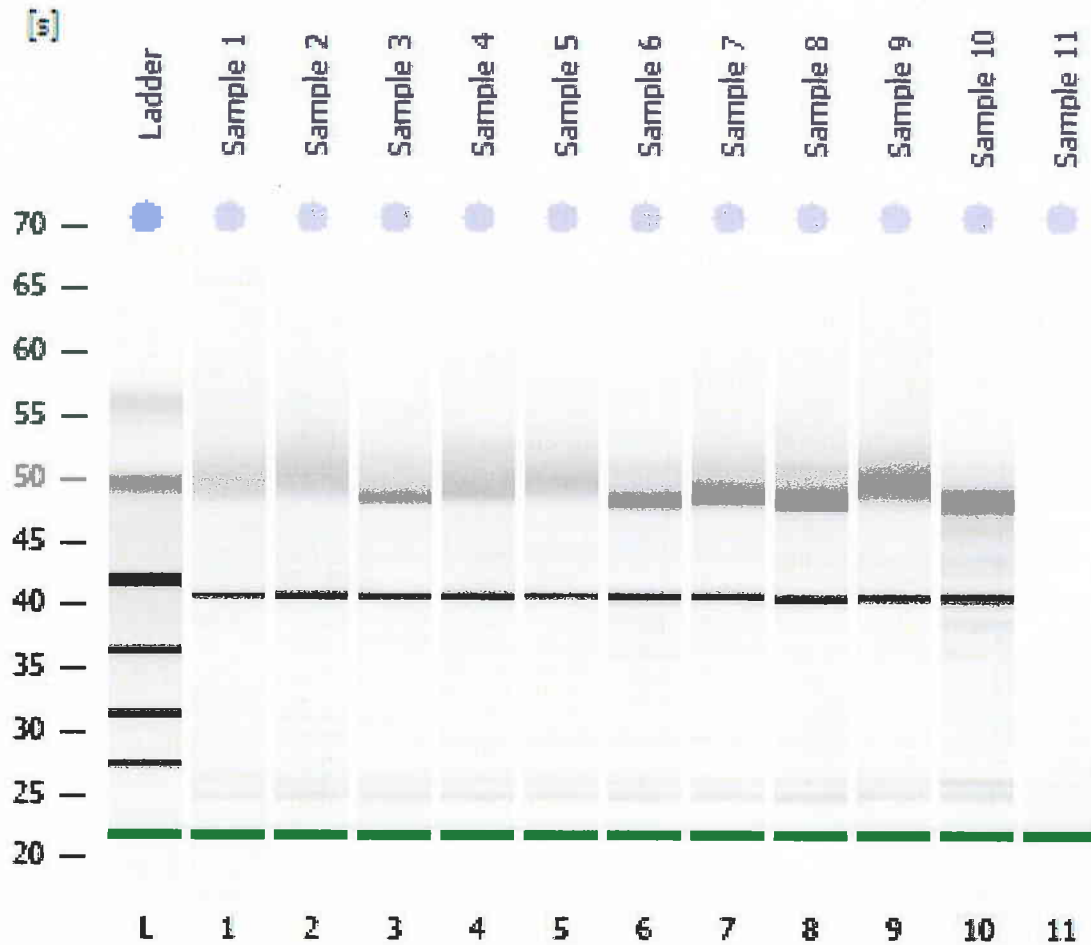
Samples 1-9 are the nine swab samples, sample 10 is the negative control and sample 11 is the positive control.

## Middle Swab Chip



Samples 1-9 are the nine swab samples, sample 10 is the negative control and sample 11 is the positive control.

## End Swab Chip



Samples 1-9 are the nine swab samples, sample 10 is the negative control and sample 11 is the positive control.

We are still seeing some broadening out of the 28s peak. This is likely not due to any sort of degradation of the RNA but more likely due to some effect of the swab being present during incubation.

Based on the above results these swabs are considered to be RNase-free and PASS.